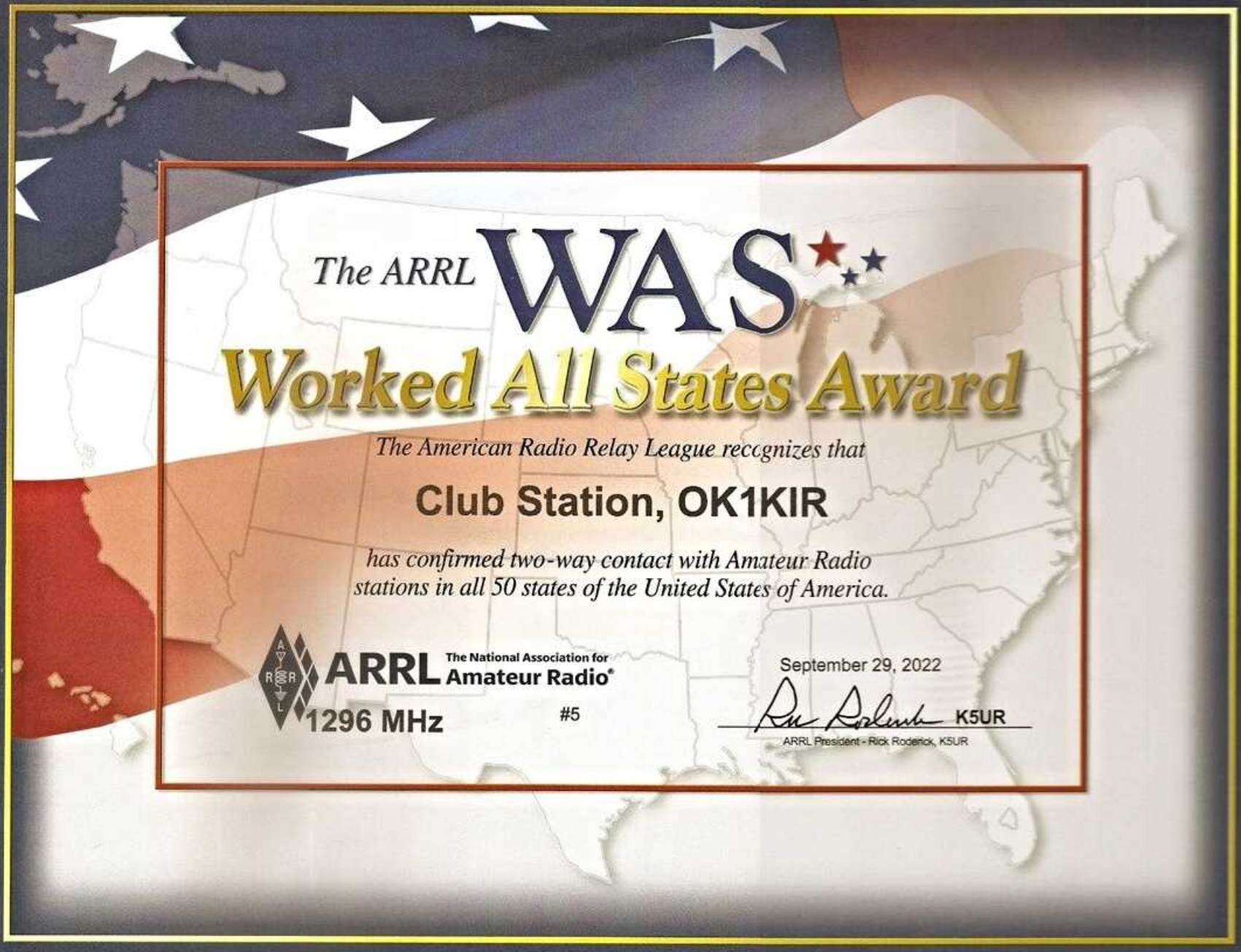


**EME**

**2022 - 2023**

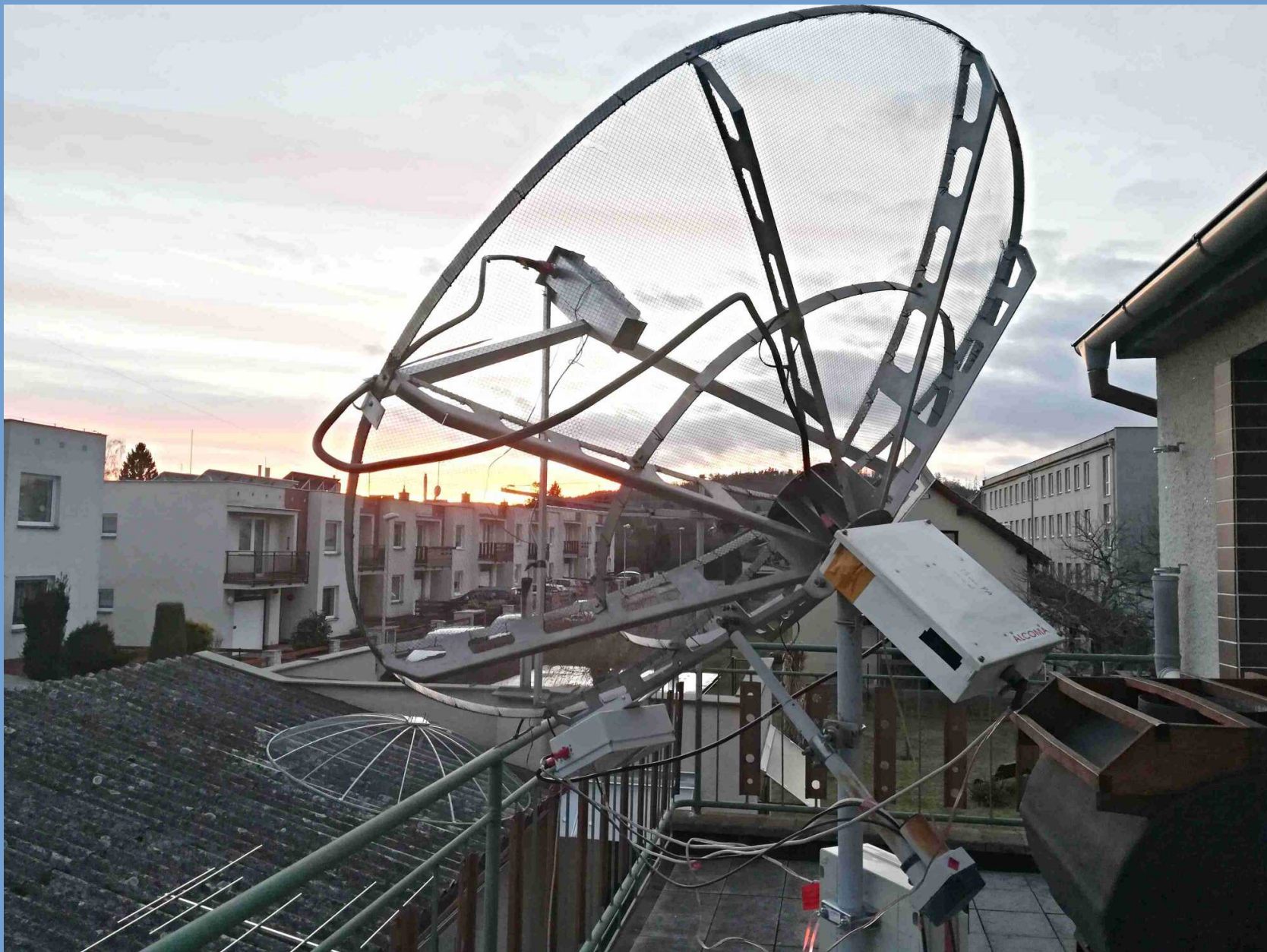


**OK1KIR #5    OK1DFC #7    OK1IL**



**KA6U**

**144, 222, 432 a 1296 MHz**



**2,3 GHz OK1USW**  
**1,8 m parabola**



**1296 MHz OK2AQ**

**1,8 m offset parabola**



**TK/HB9CRQ**

**Korsika QRV 23, 13, 6 a 3 cm**



**OJ0DX**  
**Market Reef DG5CST**



**WR8AA**

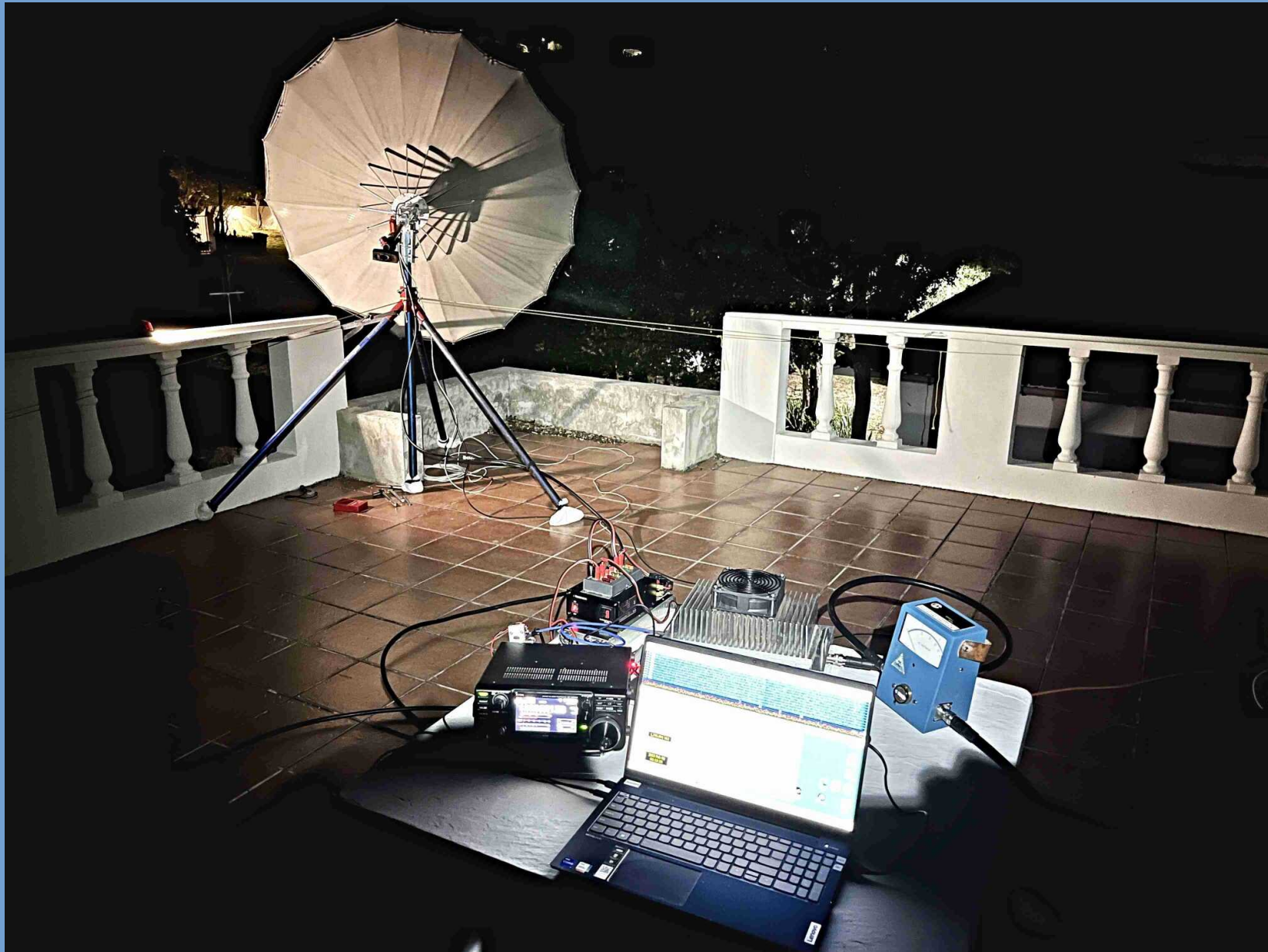
**NC11 a W1QA Vest Virginia 70 a 23 cm**





**JD1YCC**

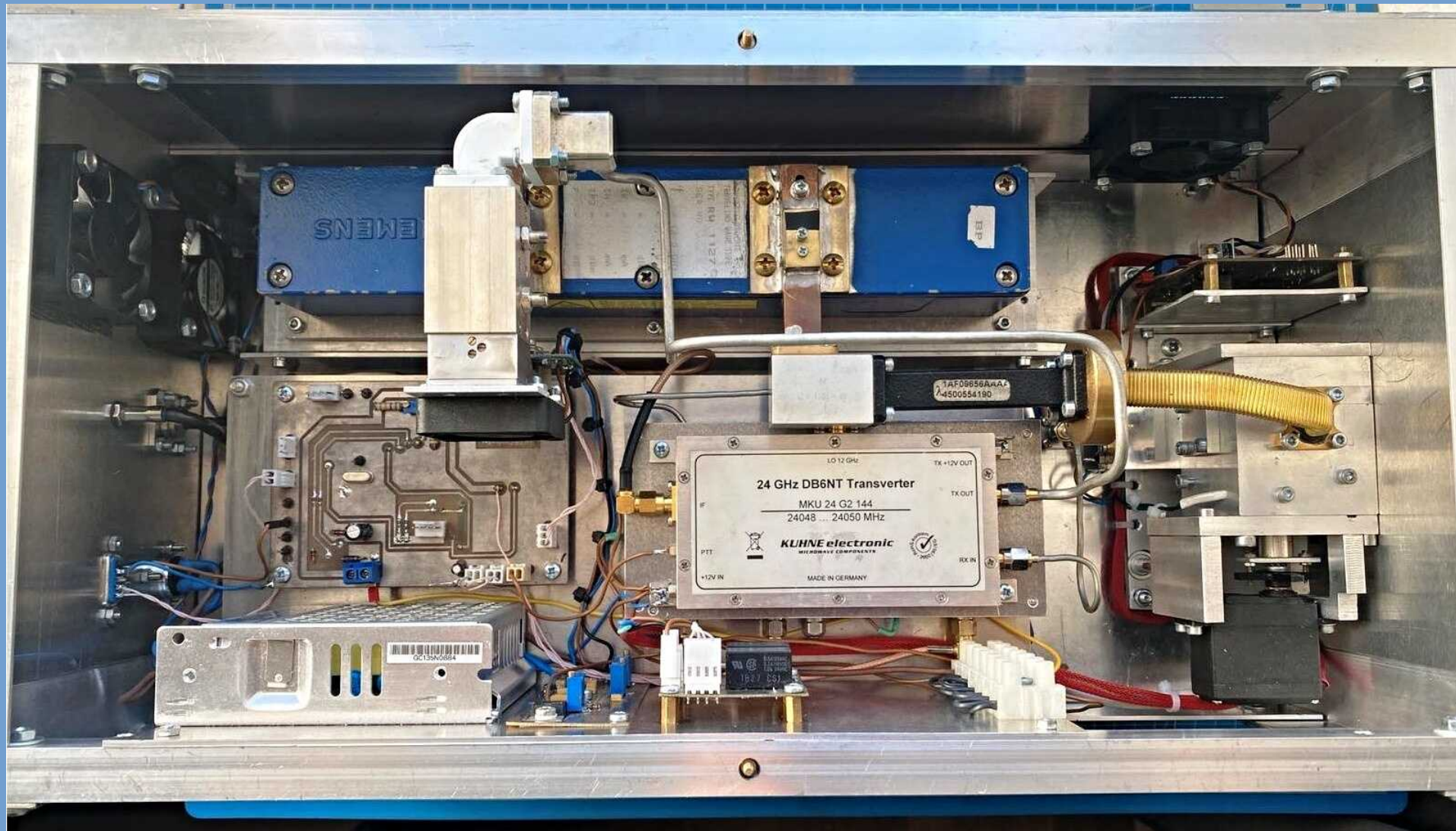
**Ogasawara QRV 2m, 70 a 23 cm**



**PJ2T**  
**Curacao KB7Q 23cm**



**N1AV**  
**Hawai 23cm**



**UR3VKE**  
**24 GHz**



**DL7YC**  
**TRX 47GHz v parabole 2,4m**



**CT1BYM**

**RX 47GHz v offset parabole 90cm – LNA 1,8dB**

# ARRL EME Contest 2022

Single Operator All Mode All  
band

1. OK1CA
9. OK1KKD op. OK1FAQ

Single Operator All Mode  
144MHz

3. OK1DIX
30. OK2AB

Single Operator All Mode  
432MHz

12. OK1TEH

Single Operator All  
Mode 1.2GHz

1. OK1DFC
2. OK2DL
15. OK2ULQ
23. OK1USW
36. OK1IL

Single Operator All  
Mode 10GHz

2. OK2AQ

# Radioamatér / Radiožurnál

**EME okno**

FRANTIŠEK STŘIHAVKA, OK1CA,  
[fr.strihavka@seznam.cz](mailto:fr.strihavka@seznam.cz)

**WWW.VHF.CZ**